



Tower Road, Epping, CM16

BUTLER  STAG



**This delightful property has been enhanced and modernised by the current owners, suiting families looking for spacious accommodation.**



## Freehold

- Detached Family Home
- Stunning Throughout
- Play/Study Room
- Three Bedrooms
- Open Plan Kitchen/Living Room
- 124' South Facing Garden

The property is arranged over two floors. The ground floor comprises a study/office room which is very spacious, a stunning open plan kitchen/lounge/dining room which is perfect for entertaining, a kids playroom which can be used as a separate snug room.

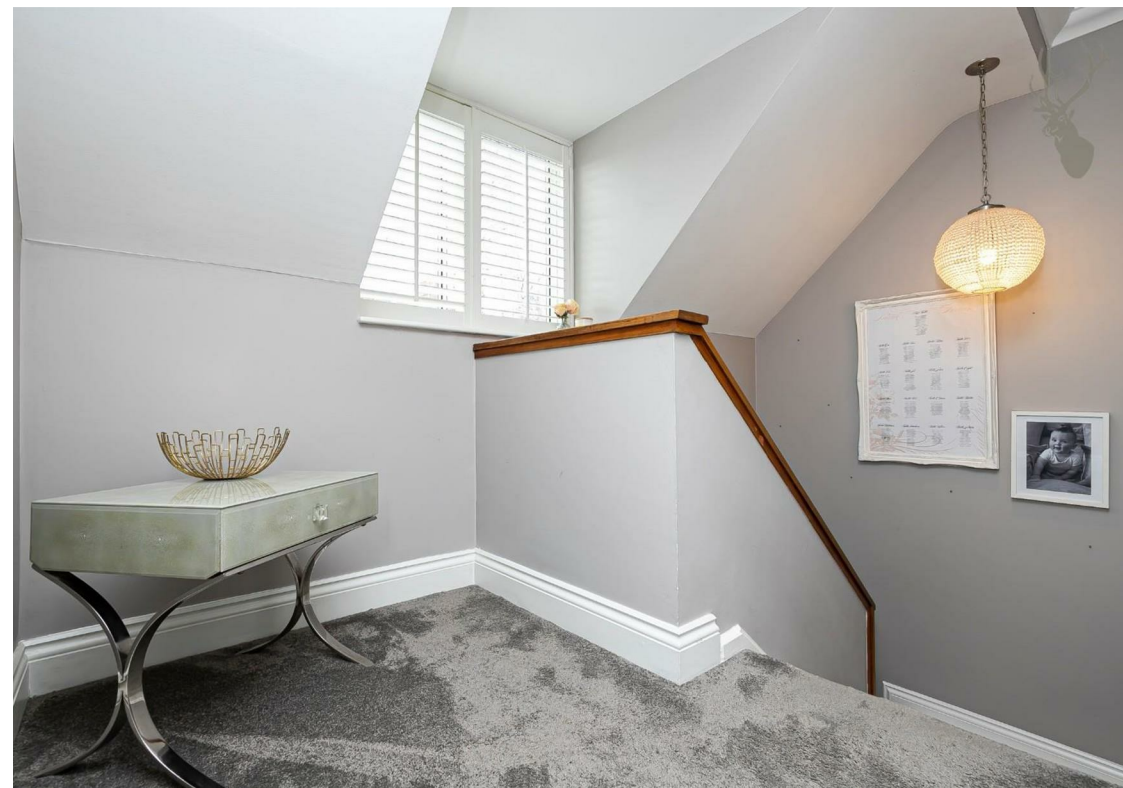
The first floor landing leads to three good sized bedrooms and a family bathroom, the master having a walk in wardrobe and en suite.

The generous sized south facing garden is well maintained providing a good degree of seclusion.

Tower road is in a prime location within the historic market town of Epping. It is ideally located for local amenities including the High Street with a comprehensive selection of shops, pubs and restaurants. Transport links into London are excellent and there are several well regarded state and private schools within easy reach, some with transport pick up points locally.

An immaculately presented four bedroom semi detached family home in a premier location positioned off Epping High Street.





## Tower Road

### Ground Floor

Approx. 126.81 Sq. meters (1365 Sq. feet)



### First Floor

Approx. 75.90 Sq. meters (817 Sq. feet)



Total area: approx. 202.71 Sq. meters (2182 Sq. feet)  
For illustration purposes only - not to scale  
www.lpaplus.com



# BUTLER & STAG

☎ 01992 667666

🏠 4 Forest Drive, Theydon Bois, Essex, CM16 7EY

✉ theydon@butlerandstag.com

[www.butlerandstag.uk](http://www.butlerandstag.uk)

IMPORTANT NOTICE - These particulars have been prepared in good faith and they are not intended to constitute part of an offer or contract. We have not performed a structural survey on this property and the services, appliances and specific fittings have not been tested. All photographs, measurements, floor plans and distances referred to are given as a guide and should not be relied upon.